



Specified nonprofit corporation

Immigration Lawyer Association Incorporated.

入国管理国際法務協会

◆ Immigration-related ◆

Permanent residence permit, study abroad qualifications outside activities
Extension of period of stay, change, acquisition
Re-entry, qualification certification
Residence card, passport
Special permission to stay, etc.

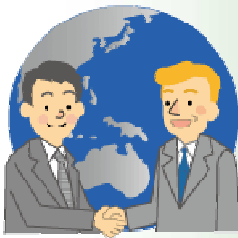
Immigration expert Intermediary will respond to consultation

Except for the special case

No need for personal appearance to Immigration Bureau

◆ Public relations related to domestic duties ◆

Acquisition of nationality, recovery, naturalization
International marriage, divorce, marriage requirements
Adoption, recognition
Change custody, visitation
Inheritance, testament
Company formation
Industrial waste permit, etc.



Specialized workers
for the various problem-solving
Please consult



◆ Social life related ◆

Foreign driver's license switching
National Health Insurance, health insurance, pension
Real estate purchase, lease
Traffic accident, insurance
Employment insurance, work-related injury insurance
Personal bankruptcy
School education, etc.

◆ Family life related ◆

Tax, tax return
Consumer trouble
Neighbor trouble
Moving House, college, employment
Hospital Admission/discharge, medical
Banking and automobile purchase
Bulky waste and recycling, etc.

本部 〒432-8018 Shizuoka-ken, Hamamatsu-shi, Naka-ku, Shijimizuka, 3-18-33

TEL : **053-456-0151**

FAX : **053-458-0249**

URL : <http://www.ilai.jp>

E-mail : info@ilai.jp



English : **090-3853-0904**

(英語)

Reception office